

Technical Specifications



World's No.1 3-wheeler.
Nigeria's No.1 Keke Key.

Engine

Type	Twin Spark plug, 2 valve, 4-stroke engine with Aluminum block
Cubic Capacity	198.88 cc
Power	8.1 kW @ 5000 +/- 250 rpm
Torque	18.0 Nm @ 3500 +/- 250 rpm
Engine Cooling	Air Cooled + Oil Cooled
Clutch	Wet Multi plates type + Anti Judder
Oil Strainer	Magnetic
Oil filter	Screw-on type bigger filter

Chassis & Body

Suspension - Rear	Independently sprung rear wheel by trailing arm with helical spring & hydraulic damper
Spare Wheel	Near Driver with anti-theft lock
Front Mudguard	Metallic
Bumper	Chassis mounted
Scudo	Protruded design
Fuel tank Capacity	Petrol : 8 liters & 1.5 liters reserve

Dimensions

Wheel Base	2000 mm
Overall Length	2635 mm
Overall Width	1300 mm
Overall Height	1710 mm
Wheel Track	1150 mm
Turning Circle Radius	2880 mm
Minimum Ground Clearance	200 mm

Electricals

TPS (Throttle Position Sensor)	Mounted on carburetor
Battery Location	Near Driver with anti-theft lock/12V 32 Ah
Magneto	150 W

Weights

GVW	678 Kgs
Payload	330 Kgs
Kerb Weight	348 Kgs

Performance

Gradeability	19%
Top Speed	65 km/h



Bajaj Auto Limited
Akurdi, Pune 411 035, India.
www.globalbajaj.com

Dealer:

Distributed by:

Notes: Values given above are nominal & for guidance only, 15% variation is allowed to cater to production and measurement. • All dimensions are under un-laden conditions. • Definitions of terminologies wherever applicable are as per Relevant IS/ISO standards. • Specifications are subject to change without notice.

20
Advanced
Features!

Introducing the all-new
Bajaj RE
with the revolutionary
Twin-Spark Engine.



Two Spark Plugs



Reinforced Chassis



Bigger Oil Filter



Improved Reverse Gear



Anti Judder Clutch



Increased Leg Space

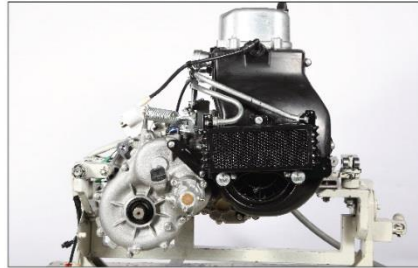


World's No.1 3-wheeler.
Nigeria's No.1 Keke.

**20 new advancements
make the new Bajaj RE
the perfect 3-wheeler!**



PERFORMANCE



DIGITAL TWIN SPARK ENGINE

- Two spark plugs
- Complete fuel burning
- › More power & torque
- › Lower emissions



REDESIGNED GEAR MECHANISM

- Redesigned gear teeth
- Increased slot width
- › Smoother driveability



REDESIGNED ENGINE COOLING MECHANISM

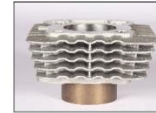
- Corrugated fins
- Redesigned fan
- › More mileage



DIGITAL IGNITION WITH TPS

- Optimum ignition time in varying load conditions
- › Greater load pulling capability
- › Better gradeability

DURABILITY



REDESIGNED ENGINE CYLINDER BLOCK & PISTON

- New cylinder block
- Redesigned piston
- › Reduces wear & tear



REDESIGNED DUST COVER AND FUEL TANK

- Dust cover sealed with crankcase
- › Protects from dust & foreign particles



DUAL OIL FILTRATION

- Bigger oil filtration area
- Magnetic oil strainer
- › Removes ferrous impurities from oil
- › Reduced running cost
- › Cleaner emissions



REDESIGNED CRANK CASE AND CAMSHAFT

- Bigger main gear shaft bearing
- Modified oil lubrication camshaft
- › Increases lubrication
- › Increases engine reliability



ANTI JUDDER CLUTCH

- New thrust ball bearing for clutch
- Redesigned rack and pinion
- › Smoother on-road performance
- › Minimal jerks during gear shift



REDESIGNED IMPROVED REVERSE GEAR MECHANISM

- Fixed end gear cable
- Stainless cable
- › Increased reliability of gear shifting cables

SAFETY



REINFORCED CHASSIS DESIGN

- Additional strengthening in several areas
- › Longer lasting chassis



REDESIGNED TURN INDICATORS & TAIL LAMPS

- Better looking and repositioned
- › Less prone to breakage



REDESIGNED CHASSIS MOUNTED BUMPER

- Stonger and longer bumper
- Bumper on the chassis
- › No damage to body in case of rear collision
- › Lower maintenance cost



UPRIGHT WINDSHIELD

- Single piece & angle changed
- Green tint included
- › Better visibility
- › Reduction in sunlight transmission

COMFORT & STYLE



REDESIGNED MUSCULAR SCUDO

- › Better road visibility



IMPROVED CABIN ERGONOMICS

- More knee clearance
- Better reach to handlebar
- › Reduced fatigue
- › No obstruction while turning



HOOD PIPE & WATER SPLASH GUARD

- › Allows more head room



REDESIGNED DRIVER CABIN FLOOR

- New brake pedal position
- › Reduces ankle strain & fatigue



LINEAR SIDE PROFILE AND BUCKET SEATS

- › Greater comfort for both driver and passenger



EXTRA EQUIPMENT

- Mobile charging point
- Car-like ignition
- Choke near steering
- Bottle holder